

TC-500R8PD2

500W PS2 Mini High Efficiency Redundant Power Supply



Features

- Universal Input, Active PFC
- Efficiency: 88% at full load
- OPP (Over Power Protection)
- OVP (Over Voltage Protection)
- OCP (Over Current Protection)
- SCP (Short Circuit Protection)
- MTBF > 100,000 Hours
- PMBus 1.2 for Digital Power Management
- Fit into tower server without extra brackets

Specifications

Model Number	Efficiency
TC-500R8PD2	88%
RoHS Compliance	Connector Type
YES	Main Connector :: 24 pin/ 8pin EPS 12V :: 2/ Molex :: 2/ SATA :: 4/ Floppy :: 1
Output Wattage	Dimensions (WxHxD)
500	Width 5.91" (150.1 mm) Height 3.39" (86.1 mm) Depth 7.48" (190.0 mm)

Front View



Side View

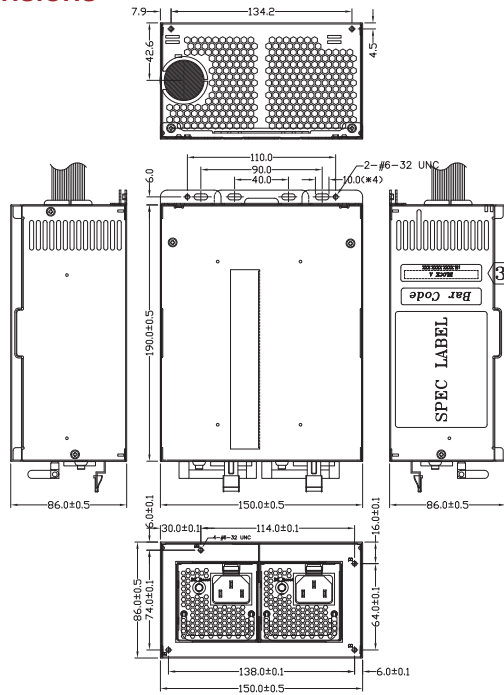


Rear View

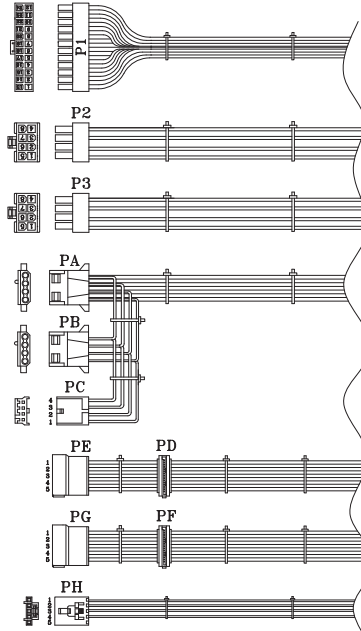


We at iStarUSA Group offer OEM/ODM services for Industrial Power, Custom Power, Chassis, Cabinets, and Data Storage. Through our skilled metal bending, milling, and silk screening we can provide you with unique customizations that will make your product stand out from the rest. With iStarUSA Group's OEM/ODM Solutions you can be sure to receive one-of-a-kind products for your one-of-a-kind business.

Dimensions



NOTE:
1. ALL THE LENGTH OF OUTPUT
WIRES EXCLUDE HOUSING.



REF. ID	PN	SIGNAL	WIRE COLOR	GAUGE	CONNECTOR TYPE	CABLE LENGTH
P1	1	+3.3VDC	ORANGE	18	MOLEX 38-01-2060 or EQUIV.	500±15mm
	2	+3.3VDC	ORANGE	18		
	3	COM	BLACK	18		
	4	+5VDC	RED	18		
	5	COM	BLACK	18		
	6	+5VDC	RED	18		
	7	COM	BLACK	18		
	8	+5VDC	RED	18		
	9	+5VSB	PURPLE	18		
	10	+12V3	YEL/BLUE	18		
	11	+12V3	YEL/BLUE	18		
	12	+3.3VDC	ORANGE	18		
	13	+3.3VDC	ORANGE	18		
	14	+5VDC	BROWN	22		
	15	COM	BLACK	18		
	16	PS-ON	GREEN	22		
	17	COM	BLACK	18		
	18	COM	BLACK	18		
	19	COM	BLACK	18		
P2	20	COM	BLACK	18	MOLEX 38-01-2060 or EQUIV.	500±15mm
	21	+5VDC	RED	18		
	22	+5VDC	RED	18		
	23	+5VDC	RED	18		
	24	COM	BLACK	18		
	1	COM	BLACK	18		
	2	COM	BLACK	18		
	3	COM	BLACK	18		
	4	COM	BLACK	18		
	5	+12V1	YELLOW	18		
P3	6	+12V1	YELLOW	18	MOLEX 38-01-2060 or EQUIV.	500±15mm
	7	+12V1	YELLOW	18		
	8	+12V1	YELLOW	18		
	9	+12V2	YEL/BLACK	18		
	10	+12V2	YEL/BLACK	18		
	11	+12V2	YEL/BLACK	18		
	12	+12V2	YEL/BLACK	18		
	13	+12V2	YEL/BLACK	18		
	14	+12V3	YEL/BLUE	18		
	15	+12V3	YEL/BLUE	18		
PA	16	COM	BLACK	18	AMP 1-400484-0500 or EQUIV.	500±15mm
	17	COM	BLACK	18		
	18	COM	BLACK	18		
	19	COM	BLACK	18		
	20	COM	BLACK	18		
	21	+12V3	YEL/BLUE	18		
	22	+12V3	YEL/BLUE	18		
	23	+12V3	YEL/BLUE	18		
	24	+12V3	YEL/BLUE	18		
	25	+12V3	YEL/BLUE	18		
PB	26	COM	BLACK	18	AMP 171822-4 or EQUIV.	155±10mm
	27	COM	BLACK	18		
	28	COM	BLACK	18		
	29	COM	BLACK	18		
	30	COM	BLACK	18		
	31	+12V3	YEL/BLUE	18		
	32	+12V3	YEL/BLUE	18		
	33	+12V3	YEL/BLUE	18		
	34	+12V3	YEL/BLUE	18		
	35	+12V3	YEL/BLUE	18		
PC	36	COM	BLACK	18	MOLEX 38-01-2060 or EQUIV.	500±15mm
	37	COM	BLACK	18		
	38	COM	BLACK	18		
	39	COM	BLACK	18		
	40	COM	BLACK	18		
	41	+12V3	YEL/BLUE	18		
	42	+12V3	YEL/BLUE	18		
	43	+12V3	YEL/BLUE	18		
	44	+12V3	YEL/BLUE	18		
	45	+12V3	YEL/BLUE	18		
PD	46	COM	BLACK	18	MOLEX 38-01-2060 or EQUIV.	500±15mm
	47	COM	BLACK	18		
	48	COM	BLACK	18		
	49	COM	BLACK	18		
	50	COM	BLACK	18		
	51	+12V3	YEL/BLUE	18		
	52	+12V3	YEL/BLUE	18		
	53	+12V3	YEL/BLUE	18		
	54	+12V3	YEL/BLUE	18		
	55	+12V3	YEL/BLUE	18		
PE	56	COM	BLACK	18	MOLEX 38-01-2060 or EQUIV.	500±15mm
	57	COM	BLACK	18		
	58	COM	BLACK	18		
	59	COM	BLACK	18		
	60	COM	BLACK	18		
	61	+12V3	YEL/BLUE	18		
	62	+12V3	YEL/BLUE	18		
	63	+12V3	YEL/BLUE	18		
	64	+12V3	YEL/BLUE	18		
	65	+12V3	YEL/BLUE	18		
PF	66	COM	BLACK	18	MOLEX 38-01-2060 or EQUIV.	500±15mm
	67	COM	BLACK	18		
	68	COM	BLACK	18		
	69	COM	BLACK	18		
	70	COM	BLACK	18		
	71	+12V3	YEL/BLUE	18		
	72	+12V3	YEL/BLUE	18		
	73	+12V3	YEL/BLUE	18		
	74	+12V3	YEL/BLUE	18		
	75	+12V3	YEL/BLUE	18		
PG	76	COM	BLACK	18	MOLEX 38-01-2060 or EQUIV.	500±15mm
	77	COM	BLACK	18		
	78	COM	BLACK	18		
	79	COM	BLACK	18		
	80	COM	BLACK	18		
	81	+12V3	YEL/BLUE	18		
	82	+12V3	YEL/BLUE	18		
	83	+12V3	YEL/BLUE	18		
	84	+12V3	YEL/BLUE	18		
	85	+12V3	YEL/BLUE	18		
PH	86	COM	BLACK	18	MOLEX 38-01-2060 or EQUIV.	500±15mm
	87	COM	BLACK	18		
	88	COM	BLACK	18		
	89	COM	BLACK	18		
	90	COM	BLACK	18		
	91	+12V3	YEL/BLUE	18		
	92	+12V3	YEL/BLUE	18		
	93	+12V3	YEL/BLUE	18		
	94	+12V3	YEL/BLUE	18		
	95	+12V3	YEL/BLUE	18		

UNIT:mm

Compatible Chassis

* Please visit our website www.istarusa.com/en/xeal for a full list of compatible chassis

Output Rating

Voltage	Minimum Continuous	Maximum Continuous	Peak
+3.3 V	0 A	20.0 A	
+5 V	0 A	20.0 A	
+12V1	1A	16.0 A	
+12V2	0 A	16.0A	
+12V3	0A	16.0A	
-12 V	0 A	0.5A	
+5 VSB	0 A	3 A	